

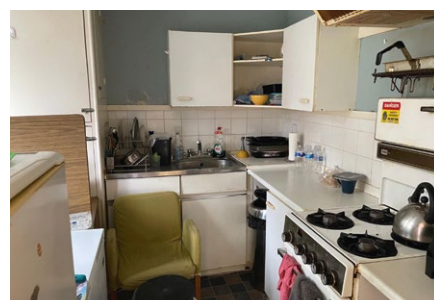
LOT
14

By Order of the Executors

2 & 2a Seward Road, Hanwell, London W7 2JR

Guide Price £695,000*

CORNER SEMI-DETACHED DWELLING ARRANGED AS TWO SELF CONTAINED FLATS WITH ADDITIONAL GARAGE/WORKSHOP



This interesting corner-sited property is located within easy reach of West Ealing Broadway and Northfields with their array of shops, bus connections and stations. Ealing Broadway with its multiple shopping facilities and station is within two miles. The property offers excellent development potential and is currently arranged as a pair of self-contained flats with a garage and workshop to the rear. The ground floor flat is a one bedroom unit and the upper floor is a split level two bedroom unit. The property will be of interest to investment purchasers and is sold with vacant possession.

ACCOMMODATION

Ground Floor Flat:- Entrance Hall, Living Room, Kitchen, Bathroom, Bedroom. First & Second Floor Flat : Entrance Hall, Landing, Kitchen, Bathroom, Separate WC, Bedroom One, Living Room, Second Floor Landing, Bedroom Two. Outside: Garage/Workshop

TENURE

Freehold

LOCAL AUTHORITY & TAX RATING

London Borough of Ealing 020 8825 5000
Council Tax Band: C for both
EPC rating D for both
Rateable value for garage/workshop: £3,850

VIEWING TIMES

By appointment through the Auctioneers



STARTING BID

FINAL BID

NOTES

SOLD UNSOLD SOLD PRIOR WITHDRAWN