

LOT

3

First Time on the market vacant for many years

14d Springfield Rd, Kingston upon Thames, Surrey KT1 2SA

GUIDE PRICE £200,000*

TOP FLOOR ONE BEDROOM CONVERSION IN NEED OF UPDATING WITH NEW LEASE



This one bedroom top floor conversion flat forms part of a period style semi-detached dwelling that has been sub divided into four units with on-site parking at the rear. The property is situated close to Kingston town centre with its multiple shopping facilities, bus connections and main line station. Kingston University is within walking distance. Good road links are easily accessible including the A405 South Circular Road, the A3, M3, M4 and M25 London orbital motorway. Heathrow London Airport is also within easy access. The flat benefits from a security entryphone system and a new 125 year lease. The property is spacious and in need of updating and modernisation throughout. The flat is sold with vacant possession and will be of interest to investment buyers, developers and owner occupiers.

ACCOMMODATION

Landing, Bedroom, Living Room, Kitchen, Bathroom/WC and a Parking Space.

TENURE

The property is sold with a new 125 year lease, Ground Rent £150 pa.

LOCAL AUTHORITY & TAX RATING

Kingston Upon Thames

Council Tax Band C

EPC rating E

VIEWING TIMES

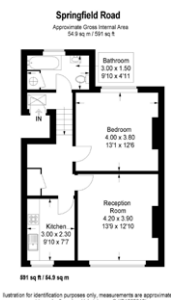
Saturday 31st August 1pm to 1:30pm

Tuesday 3rd September 1pm to 1:30pm

Tuesday 10th September 1pm to 1:30pm

Tuesday 17th September 1pm to 1:30pm

These viewing sessions are open houses. There is no need to register to attend any viewing session.



STARTING BID

FINAL BID

NOTES SOLD UNSOLD SOLD PRIOR WITHDRAWN