

LOT

4

437 Maplin Park, Langley, Berkshire SL3 8YF

Guide Price £170,000*

SECOND FLOOR TWO BEDROOM FLAT IDEAL FOR INVESTMENT



This second floor two bedroom flat is situated on a popular estate within easy reach of Langley and Slough town centres. Main line and Elizabeth line rail services are available at Slough and will be at Langley in due course. The flat would benefit from some updating and has an allocated parking space. The flat has double glazing, electric heating, entryphone system and is sold with vacant possession. This flat will be of interest to investment buyers.

ACCOMMODATION

Hall, Lounge. Kitchen, Bathroom, Bedroom One, Bedroom Two, Parking Space.

TENURE

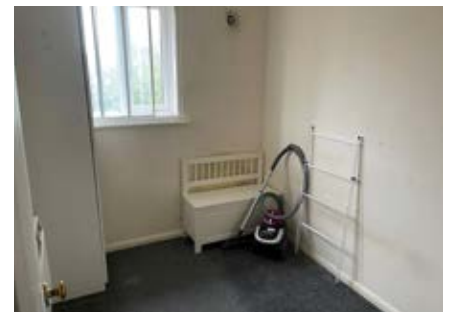
Leasehold 67 years unexpired. The vendor is willing to sign and assign a section 42 notice between exchange and completion at the buyers cost

LOCAL AUTHORITY & TAX RATING

Slough Borough Council 01753 475111
Council Tax Band C
EPC Band C

VIEWING TIMES

By appointment through the Auctioneers



THESE PLANS ARE NOT TO SCALE

STARTING BID	FINAL BID	NOTES <input type="checkbox"/> SOLD <input type="checkbox"/> UNSOLD <input type="checkbox"/> SOLD PRIOR <input type="checkbox"/> WITHDRAWN
---------------------	------------------	---