

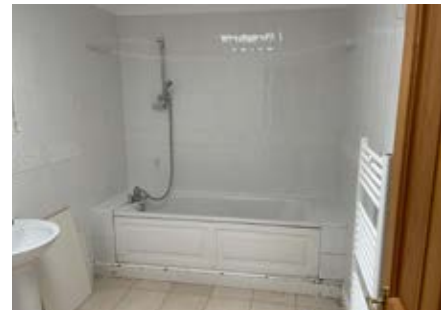
LOT
14

By Order of the Executors

1 Northolt Avenue, Ruislip HA4 6SS

Guide Price £595,000*

SPACIOUS EXTENDED FOUR BEDROOM SEMI DETACHED BUNGALOW



This spacious semi-detached bungalow is situated within a very short walk of South Ruislip Station that serves Central and Main Lines. The area is well served by bus routes, local schools and open spaces. Good road links are easily accessible, in particular the A40 Western Avenue that serves Central London, the M40 and the M25 London Orbital Motorway. The property offers good sized accommodation and is presented in good order throughout. It benefits from gas fired central heating and double glazing as well as having off street parking and a garage. The property is being sold with full vacant possession and will be of interest to investment buyers and owner occupiers.

ACCOMMODATION

Entrance Hall, Bedroom One, Bedroom Two, Bedroom Three, Dining Room, Reception Room, Kitchen/Breakfast, Bathroom, Separate WC, First Floor Landing, Bedroom Four, Garage, Garden.

TENURE

Freehold

LOCAL AUTHORITY & TAX RATING

London Borough of Hillingdon
Council Tax Band E
EPC Band D

VIEWING TIMES

By appointment through the Auctioneers



STARTING BID

FINAL BID

NOTES

SOLD UNSOLD SOLD PRIOR WITHDRAWN