

CLIENT
AB

PROJECT
20 Acton Lane
NW10 8TT

DRAWN BY
AK

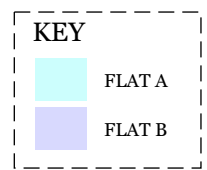
ISSUE
B-30.06.22

SCALE
1-100 @A3

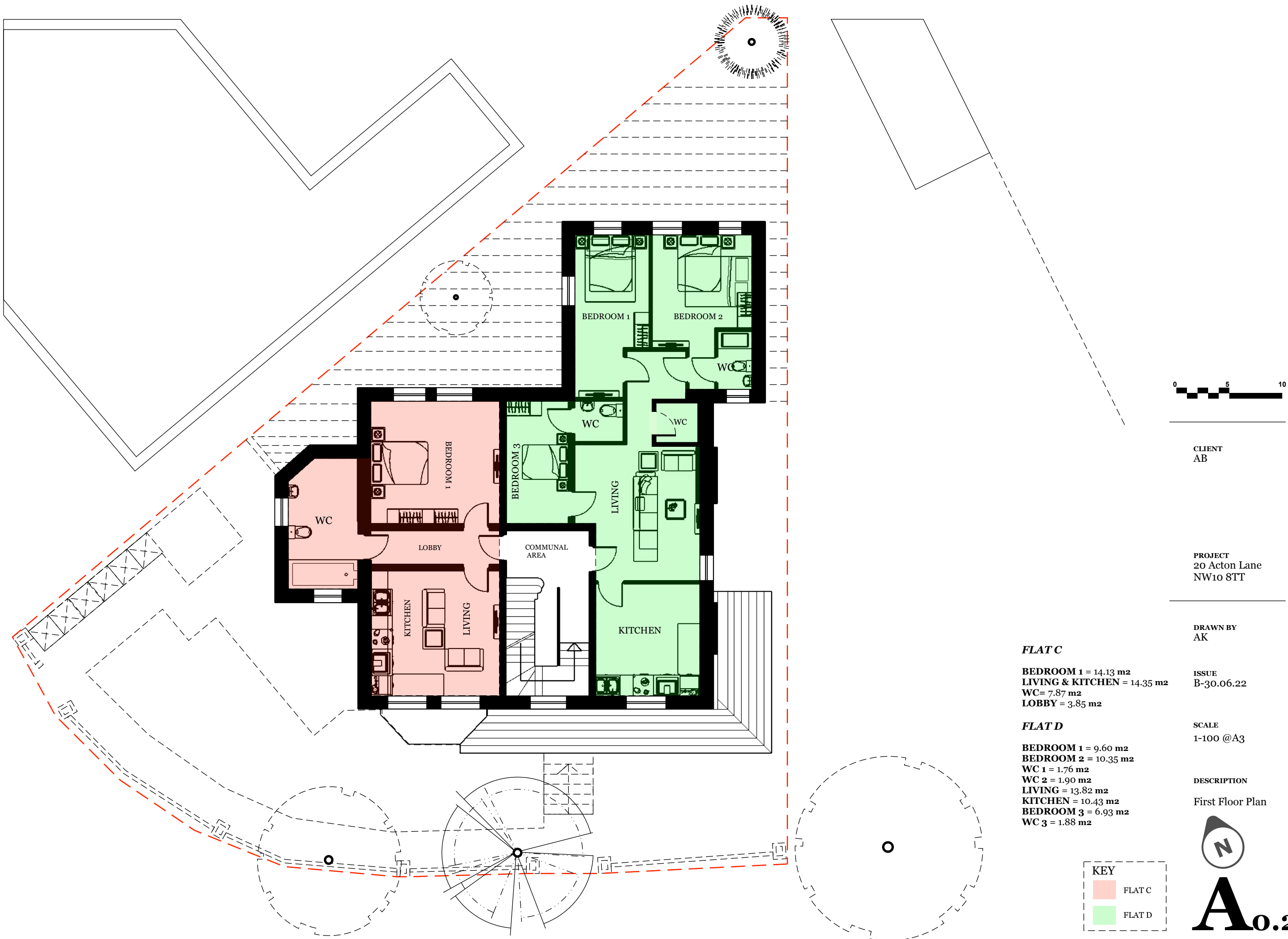
DESCRIPTION
Ground Floor Plan

FLAT A
 BEDROOM 1 = 17.22 m²
 LIVING & KITCHEN = 18.40 m²
 WC = 7.87 m²
 LOBBY = 3.85 m²

FLAT B
 BEDROOM 1 = 17.1 m²
 WC = 2.23 m²
 UTILITY = 1.83 m²
 LIVING & KITCHEN = 18.47 m²
 BEDROOM 2 = 8.44 m²



A0.1



CLIENT
AB

PROJECT
20 Acton Lane
NW10 8TT

DRAWN BY
AK

ISSUE
B-30.06.22

SCALE
1-100 @A3

DESCRIPTION
First Floor Plan

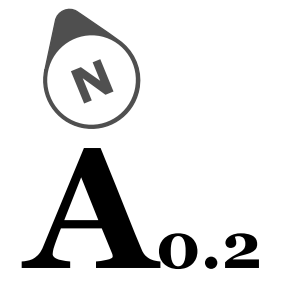
FLAT C

BEDROOM 1 = 14.13 m²
LIVING & KITCHEN = 14.35 m²
WC = 7.87 m²
LOBBY = 3.85 m²

FLAT D

BEDROOM 1 = 9.60 m²
BEDROOM 2 = 10.35 m²
WC 1 = 1.76 m²
WC 2 = 1.90 m²
LIVING = 13.82 m²
KITCHEN = 10.43 m²
BEDROOM 3 = 6.93 m²
WC 3 = 1.88 m²

KEY	
	FLAT C
	FLAT D





CLIENT
AB

PROJECT
20 Acton Lane
NW10 8TT

DRAWN BY
AK

ISSUE
B-30.06.22

SCALE
1-100 @A3

DESCRIPTION
Second Floor Plan

FLAT E
 BEDROOM 1 = 8.74 m²
 BEDROOM 2 = 8.73 m²
 LIVING & KITCHEN = 21.29 m²
 WC = 3.50 m²

FLAT F
 BEDROOM 1 = 12.00 m²
 BEDROOM 2 = 12.52 m²
 WC 1 = 2.65 m²
 LIVING & KITCHEN = 28.43 m²

